

*The "Sun Sphere  
Europa" Collection*



©  
95940S22

© COPYRIGHT ALL WORLDWIDE  
RIGHTS RESERVED BY

*james r. moder*®

*The Sun Sphere Europa Collection  
 in a room setting  
 at a glance.*





## The "Sun Sphere Europa" Collection

Contemporary designs that incorporate new energy efficient LED or Incandescent bulb versions. The larger sizes of Crystals in our spheres create a more seamless fit resulting in a brilliance not seen elsewhere. You can be energy conscious without compromising the beauty you want in a new JRM® Crystal Chandelier or Floor Lamp.



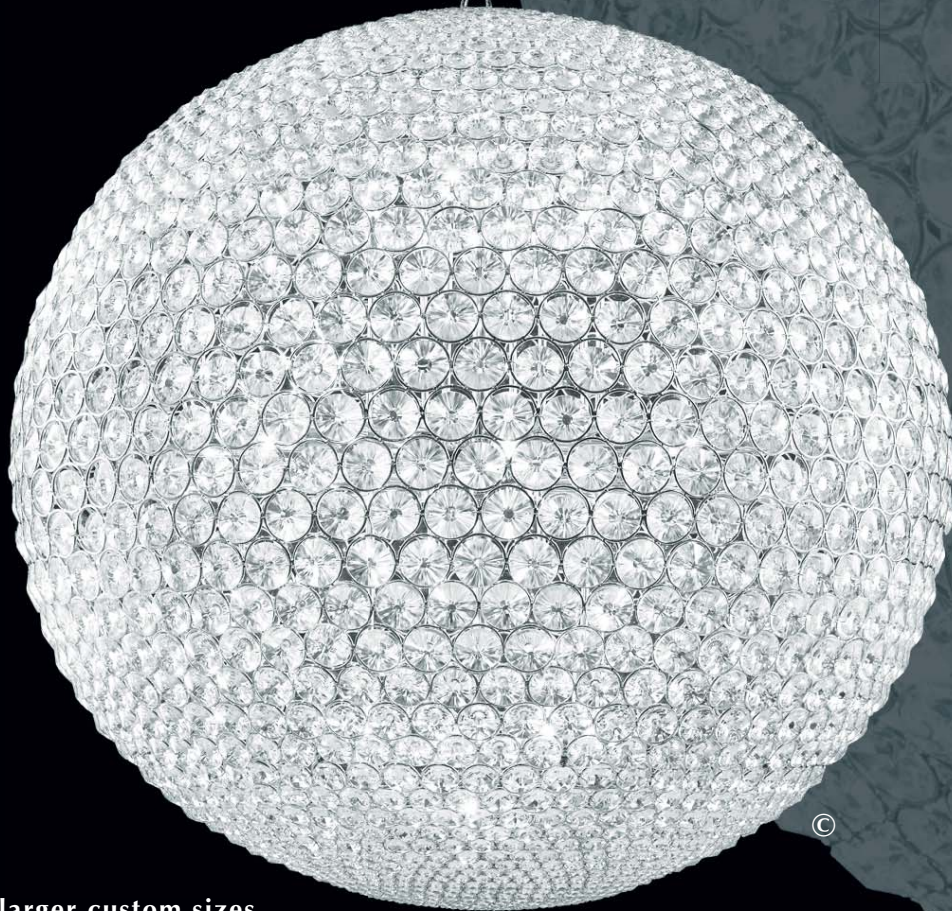
← 95930S22  
Crystal: IMPERIAL™ (-22) (pictured),  
Ø 1 x 60w, ↔ 5" dia. (13cm)  
Finish: Silver (S).



95931S22 →  
Crystal: IMPERIAL™ (-22) (pictured),  
Ø 3 x 60w, ↔ 8" dia. (20cm)  
Finish: Silver (S).



The Sun Sphere Europa  
Collection  
is available in LED  
or Incandescent  
versions



Also available in larger custom sizes  
48"(122cm), 60"(152cm), & 72"(183cm).

95940S22 LED  
Crystal: IMPERIAL™ (-22) (pictured),  
LED or Ø 32 x 60w (incandescent version),  
↔ 40" dia. (102cm)  
Finish: Silver (S).

© COPYRIGHT ALL WORLDWIDE  
RIGHTS RESERVED BY

*james r. moder*®



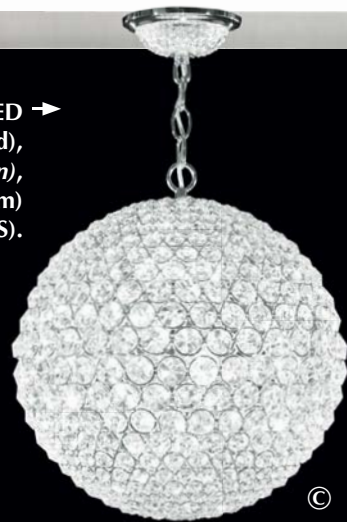


**95936S22 LED ↑**  
 Crystal: IMPERIAL™ (-22) (pictured),  
 LED or  $\varnothing$  15 x 60w (incandescent version),  
 ↔ 20" dia (51cm)  
 Finish: Silver (S).

**JRM<sup>®</sup> Design Feature!**

LED Crystal Sphere  
 versions can be adjusted  
 by remote control to  
 change colors, timing,  
 fade, strobe and flash  
 sequences.

**95934S22 LED →**  
 Crystal: IMPERIAL™ (-22) (pictured),  
 LED or  $\varnothing$  8 x 60w (incandescent version),  
 ↔ 14" dia. (36cm)  
 Finish: Silver (S).



**95938S22 LED**  
 Crystal: IMPERIAL™ (-22) (pictured),  
 LED or  $\varnothing$  32 x 60w (incandescent version),  
 ↔ 32" dia. (81cm)  
 Finish: Silver (S).

(STRASS & ELEMENTS are now named Swarovski<sup>®</sup> crystals)

Also available on a custom basis in:  
 Swarovski crystals (-00)  
 SPECTRA<sup>®</sup> CRYSTAL (-11) by Swarovski

© Copyright 2015 James R. Moder<sup>®</sup>  
 Swarovski crystals, SPECTRA CRYSTAL, STRASS are registered trademarks of Swarovski AG.





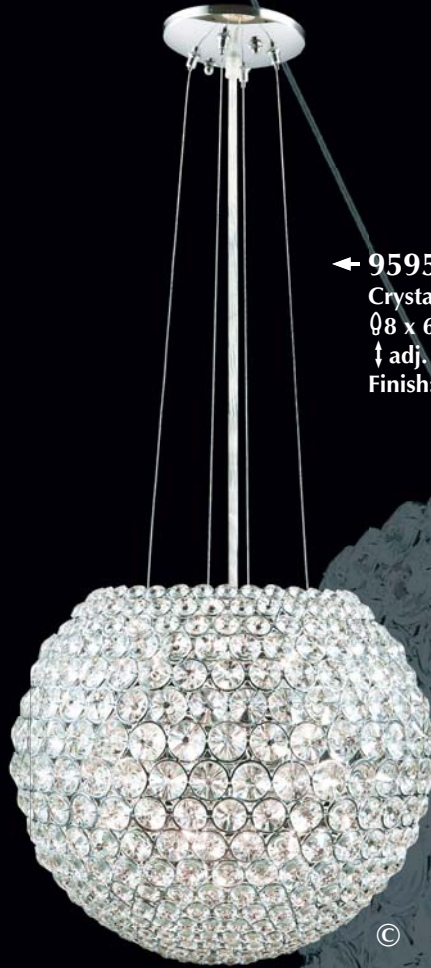
**james r. moder**® Crystal Chandeliers  
are designed and manufactured to the highest  
quality standards, engineered for best value  
and are distributed around the world.

← **95954S22**

Crystal: IMPERIAL™ (-22) (pictured),  
Ø8 x 60w, ↔14" dia. (36cm) x  
↓ adj. from 20"(51cm) to 70"(178cm)  
Finish: Silver (S).



95956S22  
20" dia.



95954S22  
14" dia.



95951S22  
8" dia.

**95951S22**

Crystal: IMPERIAL™ (-22) (pictured),  
Ø3 x 60w, ↔8" dia. (20cm) x ↓ adj. from  
13"(33cm) to 65"(165cm)  
Finish: Silver (S).

Also available on custom order  
95958S 32"(81cm) and  
95960S 40"(102cm)

**95956S22**

Crystal: IMPERIAL™ (-22) (pictured),  
Ø15 x 60w, ↔20" dia. (51cm) x  
↓ adj. from 25"(64cm) to 75"(190cm)  
Finish: Silver (S).

© COPYRIGHT ALL WORLDWIDE  
RIGHTS RESERVED BY

**james r. moder**®





← **95952S22**  
 Crystal: IMPERIAL™ (-22) (pictured),  
 Ø3 x 40w, ↔8" dia. (20cm) x ↓8"(20cm)  
 Finish: Silver (S).



**95950S22**  
 5" dia.

**95950S22**  
 Crystal: IMPERIAL™ (-22) (pictured),  
 Ø1 x 60w, ↔5" dia. (13cm) x ↓ adj. from 10"(25cm)  
 to 60"(152cm)  
 Finish: Silver (S).



**96214S22 LED**  
 Crystal: IMPERIAL™ (-22) (pictured),  
 LED, ↓66"(168cm), Stem 3"(8cm)  
 ↔ Base 10"(25cm) x 14"(36cm)  
 Finish: Silver (S).

(STRASS & ELEMENTS are now named Swarovski® crystals)

Also available on a custom basis in:  
 Swarovski crystals (-00)  
 SPECTRA® CRYSTAL (-11) by Swarovski

© Copyright 2015 James R. Moder®  
 Swarovski crystals, SPECTRA CRYSTAL, STRASS are registered trademarks of Swarovski AG.



**We are a Leading International Manufacturer!**

*To obtain the highest quality, consistency and value in our Crystal Chandelier production, we manufacture our product in our own factory and distribute in over 46 countries around the world!*

**JRM® Design Advantage!**

The ring on this Contemporary Chandelier is constructed with 2 rows of 22mm square Crystal.



**96104S22**

Crystal: IMPERIAL™ (-22) (pictured),  
Ø12 (G9) x 20w, ↔26”(66cm) x ↑3”(8cm)  
Finish: Silver (S).

To inquire about custom sizes call 1-800-663-1232 for the name of your Authorized JRM® Showroom in your area.

ADJUSTABLE Cable Length from 18”(46cm) to 60”(153cm).  
NOTE: MINIMUM 18”(46cm) from ceiling is required.

©



©

96086S22 LED

**96086S22 LED Filament or Incandescent**  
Crystal: IMPERIAL™ (-22) (pictured),  
Ø10 LED Fil. x 4w or 10 x 60 w (incandescent version),  
↔28”(71cm) x ↑7”(18cm)  
Finish: Silver (S).

© COPYRIGHT ALL WORLDWIDE RIGHTS RESERVED BY

*james r. moder*®



*“Crystals sparkle to simulate stars in the night sky. #93490 is available in various colors (see pages 200 - 203) and many other custom sizes.”*



**94950S22**  
 Crystal: IMPERIAL™ (-22) (pictured),  
 Ø6 x 7w, ↔8”(20cm) x ↓8”(20cm)  
 ↓ adj. from 18”(46cm) to 62”(157cm)  
 Finish: Silver (S).



**93490S2J**

Crystal: IMPERIAL™ (-2J) (pictured)  
 Ø16 x 60w, ↔23”(58cm) x  
 ↓23”(58cm)  
 Finish: Silver (S) or  
 Royal Gold (G).



*james r. moder*<sup>®</sup>  
 moder.IMPACT<sup>™</sup>  
 Crystal Chandelier  
*Fashion*

(STRASS & ELEMENTS are now named Swarovski® crystals)

Also available on a custom basis in:

Swarovski crystals (-00)

SPECTRA® CRYSTAL (-11) by Swarovski

© Copyright 2015 James R. Moder®

Swarovski crystals, SPECTRA CRYSTAL, STRASS are registered trademarks of Swarovski AG.

**93490S22**  
 Crystal: IMPERIAL™ (-22) (pictured),  
 Ø16 x 60w, ↔23”(58cm) x ↓23”(58cm)  
 Finish: Silver (S) or Royal Gold (G).





**96331SB22**  
(Close to  
Ceiling Mount)

**96331SB22**

Crystal: IMPERIAL™ (-22) (pictured),  
Ø 1 x 60w, ↔ 7" dia. (18cm) x  
↓ 6" (15cm)  
Finish: Satin Black (SB) or Silver (S).



**96334S22**

Crystal: IMPERIAL™ (-22) (pictured),  
Ø 4 x 60w, ↔ 12" dia. (31cm) x ↓ 7" (18cm)  
Finish: Silver (S) or  
Satin Black (SB)



**96336SB22**

Crystal: IMPERIAL™ (-22) (pictured),  
Ø 8 x 60w, ↔ 24" dia. (61cm) x  
↓ 15" (38cm)  
Finish: Satin Black (SB) or Silver (S).

© COPYRIGHT ALL WORLDWIDE  
RIGHTS RESERVED BY

*james r. moder*®



*Make your james r. moder® Crystal Chandeliers more Mysterious!  
 Order the complete james r. moder® or moder. IMPACT Crystal Chandeliers including the Veil Frame or the  
Veil Frame only! Most of our Crystal Chandeliers will fit one of the 5 sizes available.*



94457S22-45 (complete) ©

**96536-45** (Veil Frame only)  
 ↔ 36" (91cm) x ↓ 40" (101cm)  
 Finish: Satin Black (SB)



96294HB22-45  
 (complete) ©

**96517-45**  
 (Veil Frame only)  
 ↔ 17" (43cm) x  
 ↓ 27" (69cm)  
 Finish: Satin  
 Black (SB)

**96522-45** →  
 (Veil Frame only)  
 ↔ 22" (56cm) x  
 ↓ 28" (71cm)  
 Finish: Satin  
 Black (SB)



91805S22-45 (complete) ©



40699BS22-45 (complete) ©

**96548-45** (Veil Frame only)  
 ↔ 48" (122cm) x ↓ 62" (157cm)  
 Finish: Satin Black (SB)



40678BZ22-45 (complete) ©

**96531-45** (Veil Frame only) ↔ 31" (79cm) x  
 ↓ 38" (97cm) Finish: Satin Black (SB)

(STRASS & ELEMENTS are now named Swarovski® crystals)

Also available in:

Swarovski crystals (-00)

SPECTRA® CRYSTAL (-11) by Swarovski

© Copyright 2015 James R. Moder®

Swarovski crystals, SPECTRA CRYSTAL, STRASS are registered trademarks of Swarovski AG.





Oval shaped Crystal Chandelier. Perfect for your Dining Room Table.

©  
**96356S2W-74**

Crystal: IMPERIAL™ (-22) (pictured),  
Ø 9 x 60w, ↔ 22" dia. (56cm) x

↓ 13" (33cm)

Finish: Silver (S).

ADJUSTABLE Cable Length  
from 18" (46cm) to 60" (153cm).

NOTE: MINIMUM 18" (46cm)  
from ceiling is required.

**96358S2W-74**

Crystal: IMPERIAL™ (-22) (pictured),  
Ø 8 x 60w, ↔ 27" (69cm) x ↔ 18" (46cm) x

↓ 13" (33cm)

Finish: Silver (S).

© COPYRIGHT ALL WORLDWIDE  
RIGHTS RESERVED BY

*james r. moder*®





**96342S22**

Crystal: IMPERIAL™ (-22) (pictured),  
 Ø 2 x 60w, ↔ 14" (36cm) x ↓ 15" (38cm) x  
 8" (20cm) Ext.  
 Finish: Silver (S).

**96346S22**

Crystal: IMPERIAL™ (-22) (pictured),  
 Ø 6 x 60w, ↔ 30" (75cm) x ↓ 14" (36cm)  
 Finish: Silver (S).

(STRASS & ELEMENTS are now named Swarovski® crystals)

Also available in:

Swarovski crystals (-00)

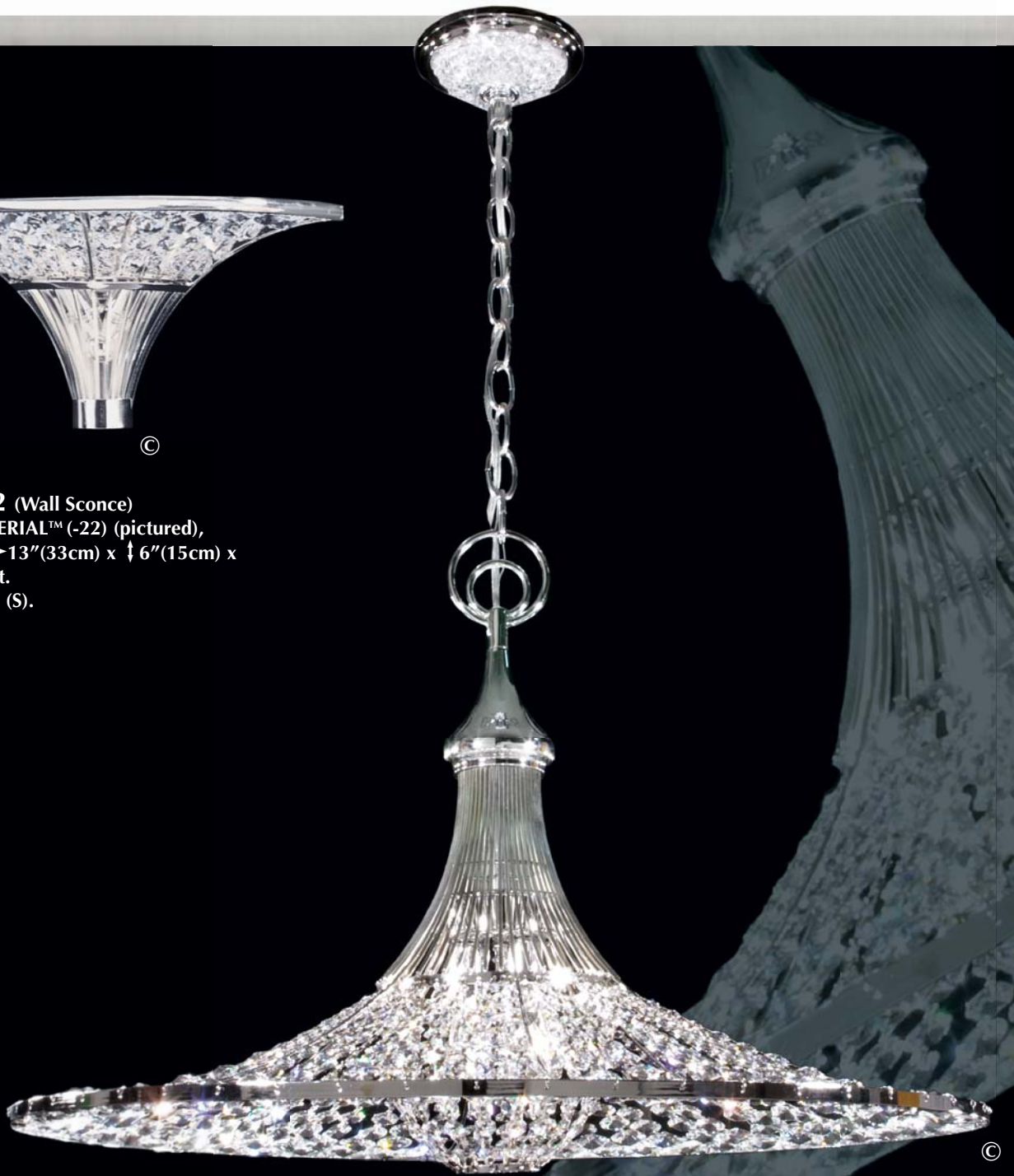
SPECTRA® CRYSTAL (-11) by Swarovski

© Copyright 2015 James R. Moder®

Swarovski crystals, SPECTRA CRYSTAL, STRASS are registered trademarks of Swarovski AG.



**95962S22 (Wall Sconce)**  
Crystal: IMPERIAL™ (-22) (pictured),  
Ø2 x 60w, ↔13"(33cm) x ↓6"(15cm) x  
6"(15cm) Ext.  
Finish: Silver (S).



**95967S22**  
Crystal: IMPERIAL™ (-22) (pictured),  
Ø3 x 60w, ↔26"(66cm) x ↓20"(51cm)  
Finish: Silver (S).

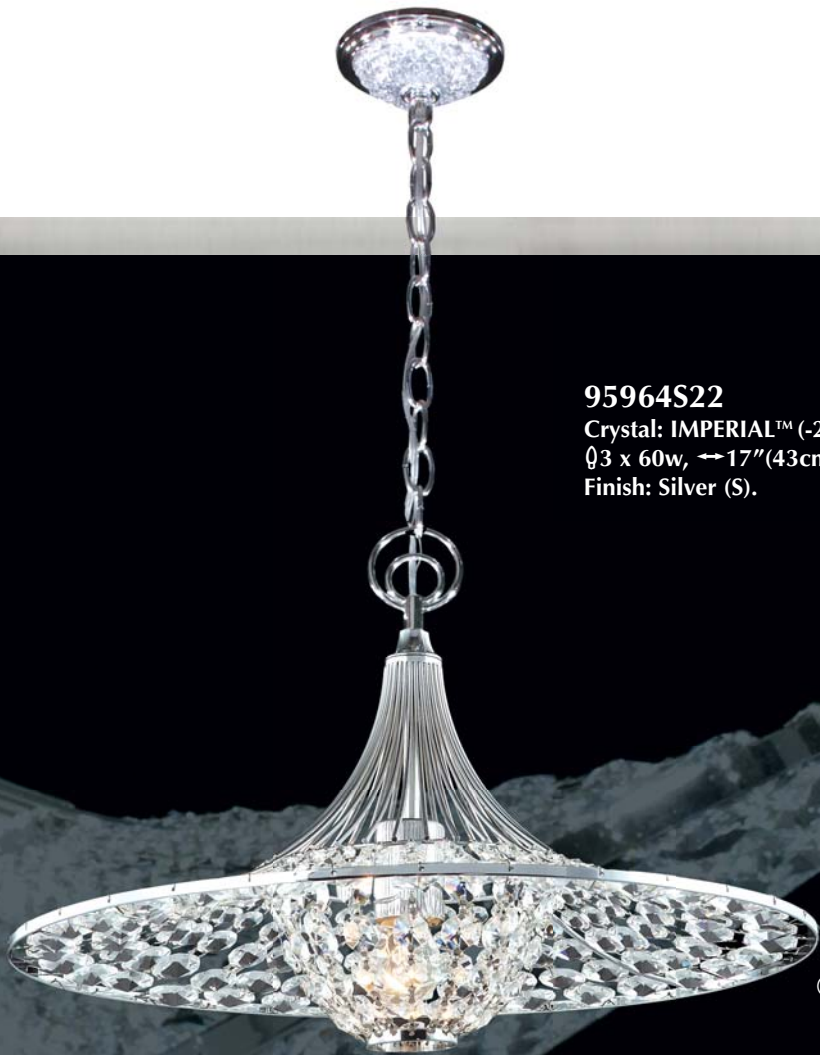
© COPYRIGHT ALL WORLDWIDE  
RIGHTS RESERVED BY

*james r. moder*®



**95964S22**

Crystal: IMPERIAL™ (-22) (pictured),  
Ø3 x 60w, ↔17"(43cm) x †13"(33cm)  
Finish: Silver (S).



**95965S22**

Crystal: IMPERIAL™ (-22) (pictured),  
Ø1 x 60w, ↔17"(43cm) x †24"(61cm)  
Finish: Silver (S).

(STRASS & ELEMENTS are now named Swarovski® crystals)

Also available in:

Swarovski crystals (-00)

SPECTRA® CRYSTAL (-11) by Swarovski

© Copyright 2015 James R. Moder®

Swarovski crystals, SPECTRA CRYSTAL, STRASS are registered trademarks of Swarovski AG.