

The "Maria Theresa Grand" Collection



©
91830S22

james r. moder.
moder. IMPACT
Crystal Chandelier
Fashion

© COPYRIGHT ALL WORLDWIDE
RIGHTS RESERVED BY
james r. moder.

*The Maria Theresa Grand Collection
in a room setting
at a glance.*



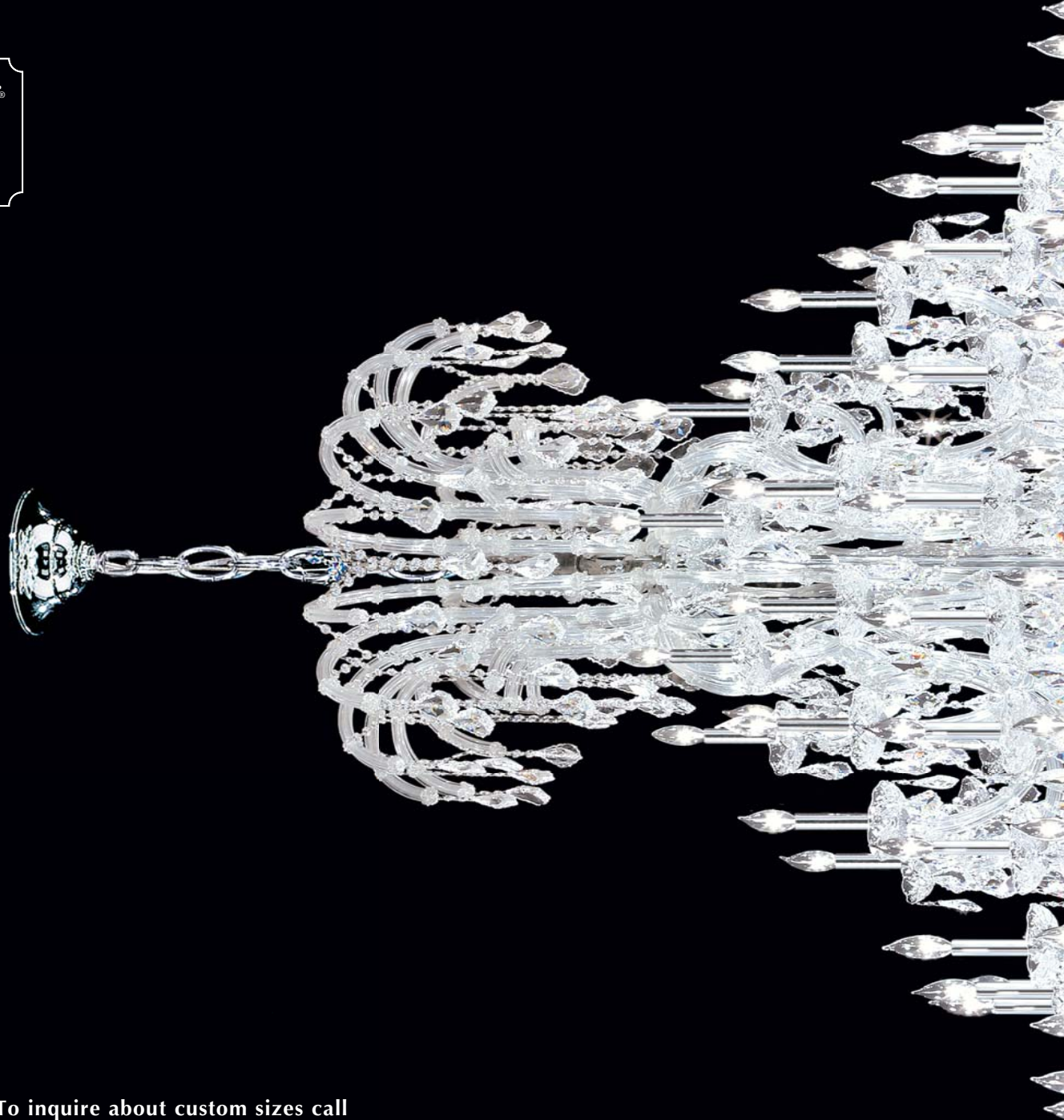
The "Maria Theresa Grand" Collection

In the tradition of European Ballrooms and Mansions of days gone by, these "Grand" Chandeliers are lavishly trimmed with beautiful Crystal pendalques. The unique design of the Maria Theresa arms result in strength and durability. The range of our Collection is unsurpassed and includes custom sizes.

james r. moder

moder IMPACT[™]
Crystal Chandelier

Fashion



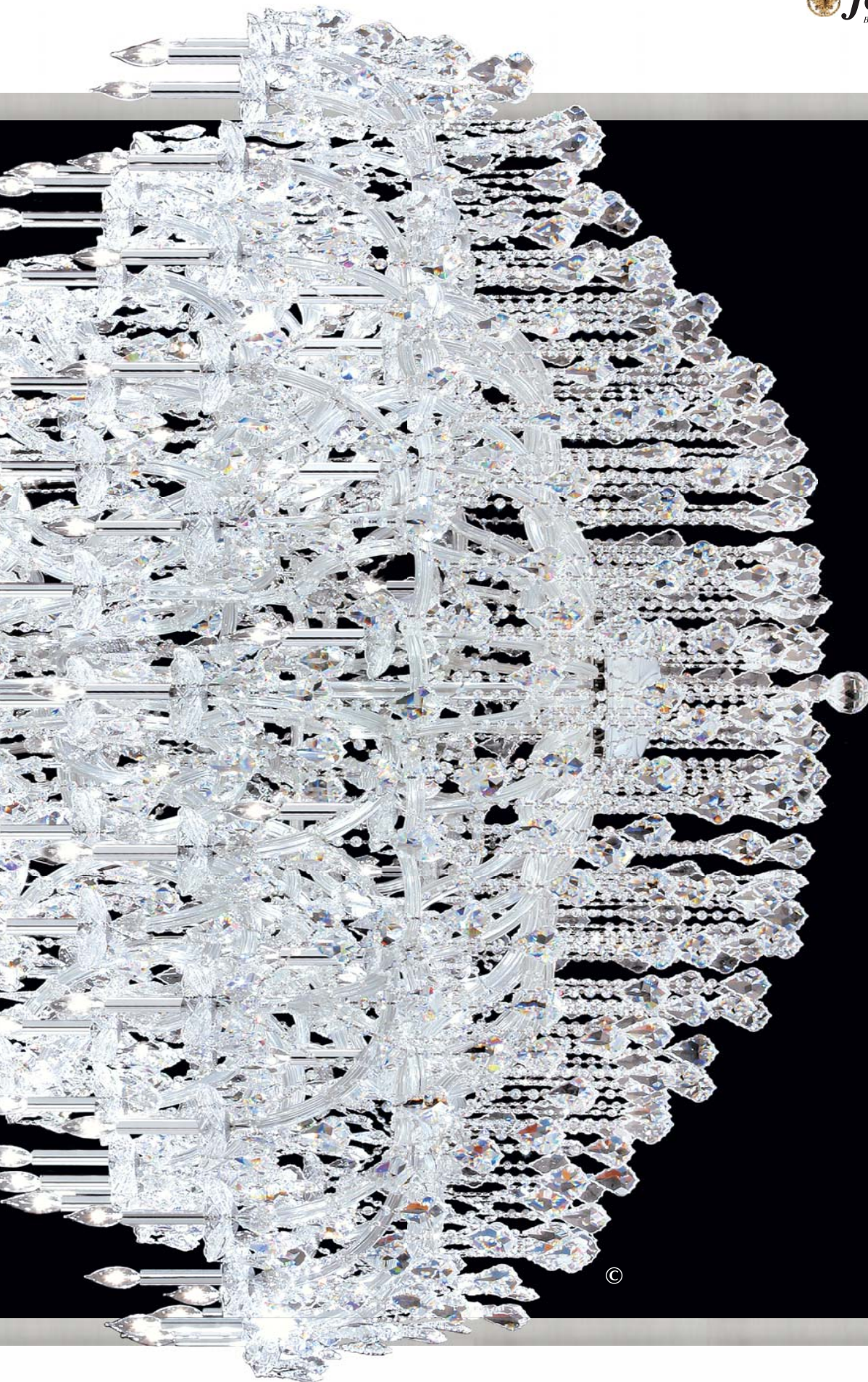
To inquire about custom sizes call
1-800-663-1232 for the name of your
Authorized JRM[®] Showroom in your area.

91830S22

Crystal: IMPERIAL[™] (-22) (pictured),
Ø128 (64+32+16+8+8) x 60w,
↔86"(218cm) x †96"(244cm)
Finish: Silver (S) or Gold Lustre (GL).

© COPYRIGHT ALL WORLDWIDE
RIGHTS RESERVED BY

james r. moder[®]



©

(STRASS & ELEMENTS are now named Swarovski[®] crystals)

Also available in:

Swarovski crystals (-00)

SPECTRA[®] CRYSTAL (-11) by Swarovski

© Copyright 2015 James R. Moder[®]

Swarovski crystals, SPECTRA CRYSTAL, STRASS are registered trademarks of Swarovski AG.



james r. moder® *Crystal Chandeliers*
are designed and manufactured to the highest
quality standards, engineered for best value
and are distributed around the world.



91760GL22

Crystal: IMPERIAL™ (-22) (pictured),
Ø 49 (32+16+1) x 60w, ↔77"(196cm) x ↓ 57"(145cm)
Finish: Gold Lustre (GL) or Silver (S).

© COPYRIGHT ALL WORLDWIDE
RIGHTS RESERVED BY

james r. moder®



james r. moder[®]
moder.IMPACT[™]
Crystal Chandelier
Fashion

©

(STRASS & ELEMENTS are now named Swarovski[®] crystals)

Also available in:

Swarovski crystals (-00)

SPECTRA[®] CRYSTAL (-11) by Swarovski

© Copyright 2015 James R. Moder[®]

Swarovski crystals, SPECTRA CRYSTAL, STRASS are registered trademarks of Swarovski AG.



We are a Leading International Manufacturer!

To obtain the highest quality, consistency and value in our Crystal Chandelier production, we manufacture our product in our own factory and distribute in over 46 countries around the world!



To inquire about custom sizes call
1-800-663-1232 for the name of your
Authorized JRM® Showroom in your area.



Note:
For your preference
bonus WHITE
candle sleeves
are also included.

91770S22

Crystal: IMPERIAL™ (-22) (pictured),
Ø 37 (18+9+9+1) x 60w, ↔ 54" (137cm) x † 54" (137cm)
Finish: Silver (S) or Gold Lustre (GL).

© COPYRIGHT ALL WORLDWIDE
RIGHTS RESERVED BY

james r. moder®



(STRASS & ELEMENTS are now named Swarovski[®] crystals)

Also available in:

Swarovski crystals (-00)

SPECTRA[®] CRYSTAL (-11) by Swarovski

© Copyright 2015 James R. Moder[®]

Swarovski crystals, SPECTRA CRYSTAL, STRASS are registered trademarks of Swarovski AG.

91690S22

Crystal: IMPERIAL[™] (-22) (pictured),
Ø 25 (16+8+1) x 60w, ↔46"(117cm) x ↓54"(137cm)
Finish: Silver (S) or Gold Lustre (GL).



Note:
For your preference
bonus WHITE
candle sleeves
are also included.

©

91796GL22

Crystal: IMPERIAL™ (-22) (pictured),
Ø 37 (16+8+8+4+1) x 60w, ↔ 46" (117cm) x † 65" (165cm)
Finish: Gold Lustre (GL) or Silver (S).

© COPYRIGHT ALL WORLDWIDE
RIGHTS RESERVED BY

james r. moder®

james r. moder[®]
moder.IMPACT
Crystal Chandelier
Fashion



Note:
For your preference
bonus WHITE
candle sleeves
are also included.

(STRASS & ELEMENTS are now named Swarovski[®] crystals)

Also available in:

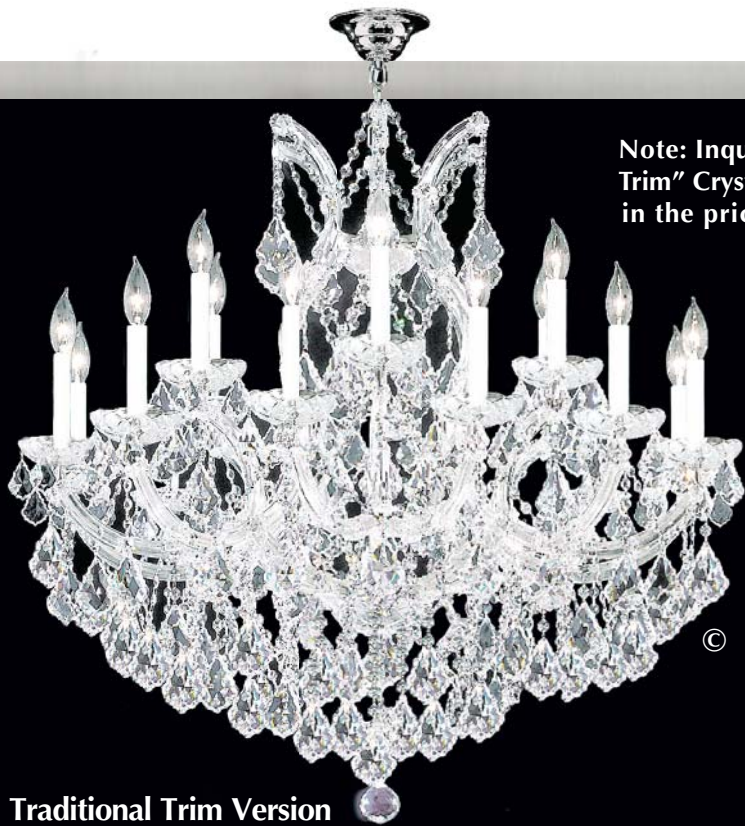
Swarovski crystals (-00)

SPECTRA[®] CRYSTAL (-11) by Swarovski

© Copyright 2015 James R. Moder[®]

Swarovski crystals, SPECTRA CRYSTAL, STRASS are registered trademarks of Swarovski AG.

91795S22
Crystal: IMPERIAL[™] (-22) (pictured),
Ø 25 (12+6+6+1) x 60w, ↔ 37" (94cm) x ↓ 52" (132cm)
Finish: Silver (S) or Gold Lustre (GL).



Note: Inquire about our "Traditional Trim" Crystal Chandeliers marked "X" in the price list at a reduced price.

Traditional Trim Version

91790S2X

Crystal: IMPERIAL™ (-22) (pictured),
 Ø 19 (12+6+1) x 60w,
 ↔ 37" (94cm) x ↓ 32" (81cm)
 Finish: Silver (S) or Gold Lustre (GL).



Note:
 For your preference
 bonus WHITE
 candle sleeves
 are also included.

91790S22

Crystal: IMPERIAL™ (-22) (pictured),
 Ø 19 (12+6+1) x 60w, ↔ 37" (94cm) x ↓ 37" (94cm)
 Finish: Silver (S) or Gold Lustre (GL).

© COPYRIGHT ALL WORLDWIDE
 RIGHTS RESERVED BY

james r. moder®



91695GL22

Crystal: IMPERIAL™ (-22) (pictured),
 Ø5 x 60w, ↔14"(36cm) x ↓25"(64cm)
 Finish: Gold Lustre (GL) or Silver (S).



Note:
 For your preference
 bonus WHITE
 candle sleeves
 are also included.

91688S22

91688S22

Crystal: IMPERIAL™ (-22) (pictured),
 Ø16 (10+5+1) x 60w, ↔31"(79cm) x ↓37"(94cm)
 Finish: Silver (S) or Gold Lustre (GL).

(STRASS & ELEMENTS are now named Swarovski® crystals)

Also available in:
 Swarovski crystals (-00)
 SPECTRA® CRYSTAL (-11) by Swarovski

© Copyright 2015 James R. Moder®
 Swarovski crystals, SPECTRA CRYSTAL, STRASS are registered trademarks of Swarovski AG.



91810S22

Crystal: IMPERIAL™ (-22) (pictured),
Ø 8 x 60w, ↔ 32" (81cm) x ↓ 16" (41cm)
Finish: Silver (S) or Gold Lustre (GL).

91809S22 (smaller version)

Ø 6 x 60w, ↔ 21" (53cm) x ↓ 15" (38cm)

91808S22 (smaller version)

Ø 3 x 60w, ↔ 16" (41cm) x ↓ 14" (36cm)

Note:
For your preference
bonus WHITE
candle sleeves
are also included.



91030S22

Crystal: IMPERIAL™ (-22) (pictured),
Ø 8+4 x 60w, ↔ 26" (66cm) x ↓ 24" (61cm)
Finish: Silver (S) or Gold Lustre (GL).

© COPYRIGHT ALL WORLDWIDE
RIGHTS RESERVED BY

james r. moder®

91812S22

Crystal: IMPERIAL™ (-22) (pictured),
 Ø13 (8+4+1) x 60w,
 ↔26" (66cm) x ↑25" (64cm)
 Finish: Silver (S) or Gold Lustre (GL).



©

Note:
 For your preference
 bonus WHITE
 candle sleeves
 are also included.



©

91800S22

james r. moder
 moder.IMPACT™
 Crystal Chandelier
Fashion

91800S22

Crystal: IMPERIAL™ (-22) (pictured),
 Ø16 (10+5+1) x 60w, ↔29" (74cm) x ↑28" (71cm)
 Finish: Silver (S) or Gold Lustre (GL).

(STRASS & ELEMENTS are now named Swarovski® crystals)

Also available in:
 Swarovski crystals (-00)
 SPECTRA® CRYSTAL (-11) by Swarovski

© Copyright 2015 James R. Moder®
 Swarovski crystals, SPECTRA CRYSTAL, STRASS are registered trademarks of Swarovski AG.



Mini Chandelier

91804S22

Crystal: IMPERIAL™ (-22) (pictured),
 Ø4 x 60w, ↔16"(41cm) x ↓16"(41cm)
 Finish: Silver (S).



91805S22

Crystal: IMPERIAL™ (-22) (pictured),
 Ø5 x 60w, ↔18"(46cm) x ↓18"(46cm)
 Finish: Silver (S) or Gold Lustre (GL).



Note:
 For your preference
 bonus WHITE
 candle sleeves
 are also included.

91806S22

Crystal: IMPERIAL™ (-22) (pictured),
 Ø6 x 60w, ↔23"(58cm) x ↓20"(51cm)
 Finish: Silver (S) or Gold Lustre (GL).

© COPYRIGHT ALL WORLDWIDE
 RIGHTS RESERVED BY

james r. moder®



91807S22 (Wall Sconce) ↑
 Crystal: IMPERIAL™ (-22) (pictured),
 Ø7 x 60w, ↔19"(48cm) x ↓28"(71cm) x
 14"(36cm) Ext.
 Finish: Silver (S) or Gold Lustre (GL).



91703S22 (Wall Sconce)
 Crystal: IMPERIAL™ (-22) (pictured),
 Ø3 x 60w, ↔11"(28cm) x
 ↓19"(48cm) x 10"(25cm) Ext.
 Finish: Silver (S) or
 Gold Lustre (GL).



91702S22 (Wall Sconce)
 Crystal: IMPERIAL™ (-22) (pictured),
 Ø2 x 60w, ↔10"(25cm) x
 ↓14"(36cm) x 9"(23cm) Ext.
 Finish: Silver (S) or Gold Lustre (GL).

91705S22 (Wall Sconce) →
 Crystal: IMPERIAL™ (-22) (pictured),
 Ø5 x 60w, ↔13"(33cm) x
 ↓19"(48cm) x 10"(25cm) Ext.
 Finish: Silver (S) or Gold Lustre (GL).



91811GL22 (Wall Sconce)
 Crystal: IMPERIAL™ (-22) (pictured),
 Ø11 x 60w, ↔28"(71cm) x ↓36"(91cm) x
 16"(41cm) Ext.
 Finish: Gold Lustre (GL) or Silver (S).

(STRASS & ELEMENTS are now named Swarovski® crystals)

Also available in:
 Swarovski crystals (-00)
 SPECTRA® CRYSTAL (-11) by Swarovski

© Copyright 2015 James R. Moder®
 Swarovski crystals, SPECTRA CRYSTAL, STRASS are registered trademarks of Swarovski AG.